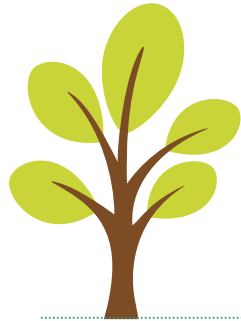


# LEED Prerequisites

to be integrated from the outset into the master plan

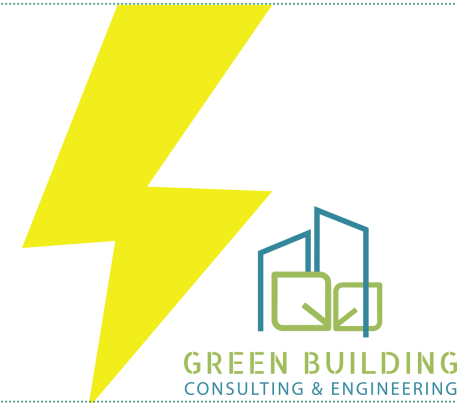


Develop and implement a site erosion and sedimentation control plan associated with project construction activities.



- Provide a dedicated space for waste collection and sorting (at least for paper, food, glass, metals and plastic)
- Develop and implement a demolition and construction waste management plan (establish waste diversion targets for at least 5 materials and explain how and where these will be treated)
- Provide a collection system for recycling mercury-containing products and materials

- Conduct a building commissioning which will audit the envelope, HVAC, VRD, process, security systems, fire protection, renewable energy production systems from an energy point of view, water, environmental quality of interior spaces and sustainability.
- Reduce energy consumption by 5% compared to a benchmark building according to ASHRAE 90.1 - 2010.
- Install energy meters and share energy consumption data with USGBC (provide meters for electricity, natural gas, biomass, propane, cold water and steam production)
- Do not use CFC type refrigerants or refrigerants that have ozone depletion potential for any new HVAC equipment



- Reduce the water requirements for irrigation by 30% from the baseline. (prefer no irrigation at all if possible)
- Reduce domestic water needs by 20% compared to the baseline.
- Install water meters and share water consumption data with USGBC (provide meters for municipal water, on-site water sources and treated drinking water)



- Meet minimum air quality requirements for mechanically and naturally ventilated spaces according to ASHRAE Standard 62.1-2010
- Prevent and minimize exposure to tobacco smoke (locate the smoking area 7.5 meters from any entrance, air intake and open window or better ban smoking on the entire site)